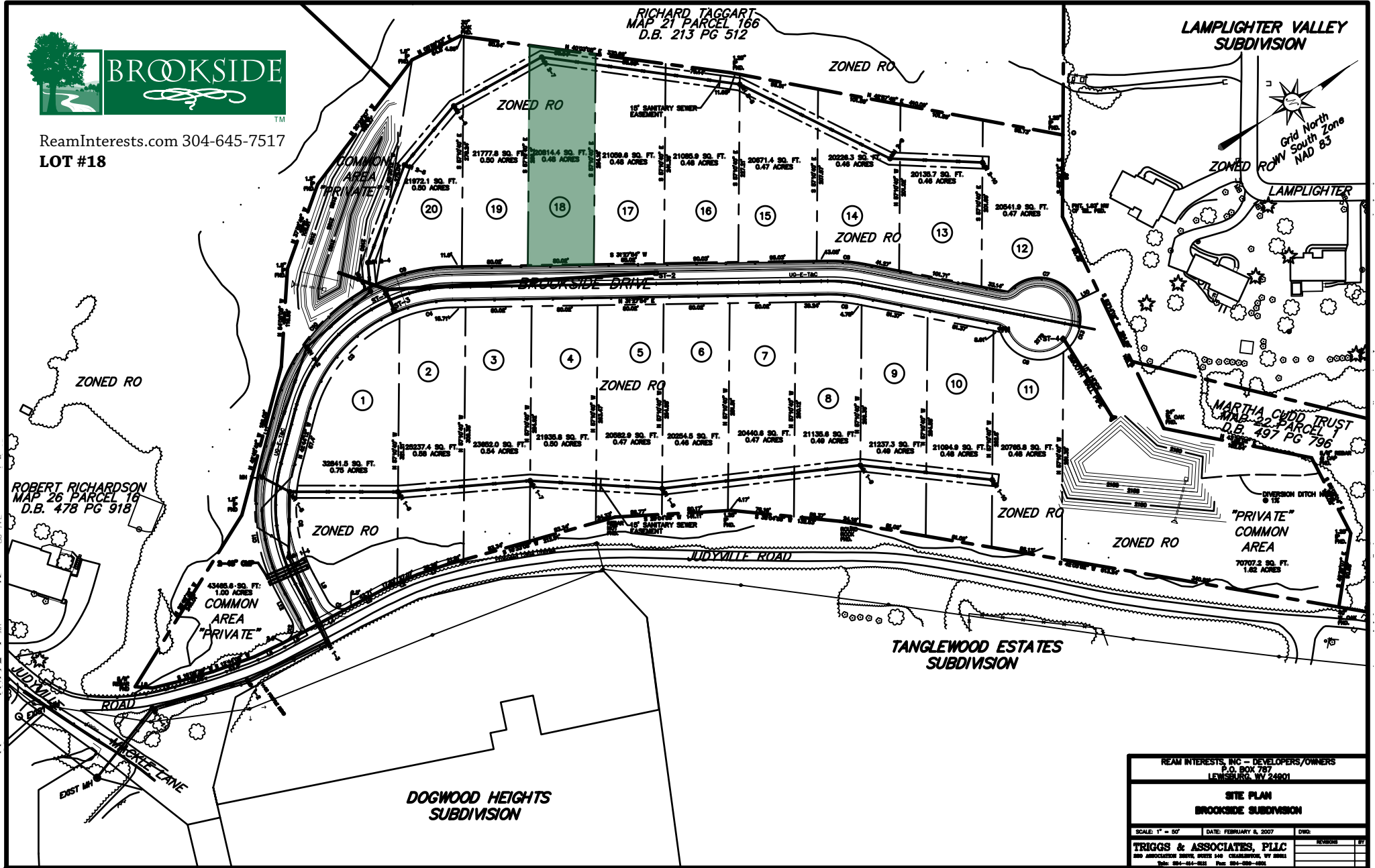




ReamInterests.com 304-645-7517
LOT #18



REAM INTERESTS, INC - DEVELOPERS/OWNERS P.O. BOX 707 LEWISBURG, WV 24801		
SITE PLAN BROOKSIDE SUBDIVISION		
SCALE: 1" = 50'	DATE: FEBRUARY 8, 2007	DWG. NO.
TRIGGS & ASSOCIATES, PLLC 280 ASSOCIATION DRIVE, SUITE 100 CHARLESTON, WV 25301 PH: 304-544-0221 FAX: 304-544-0222		REVISION BY