

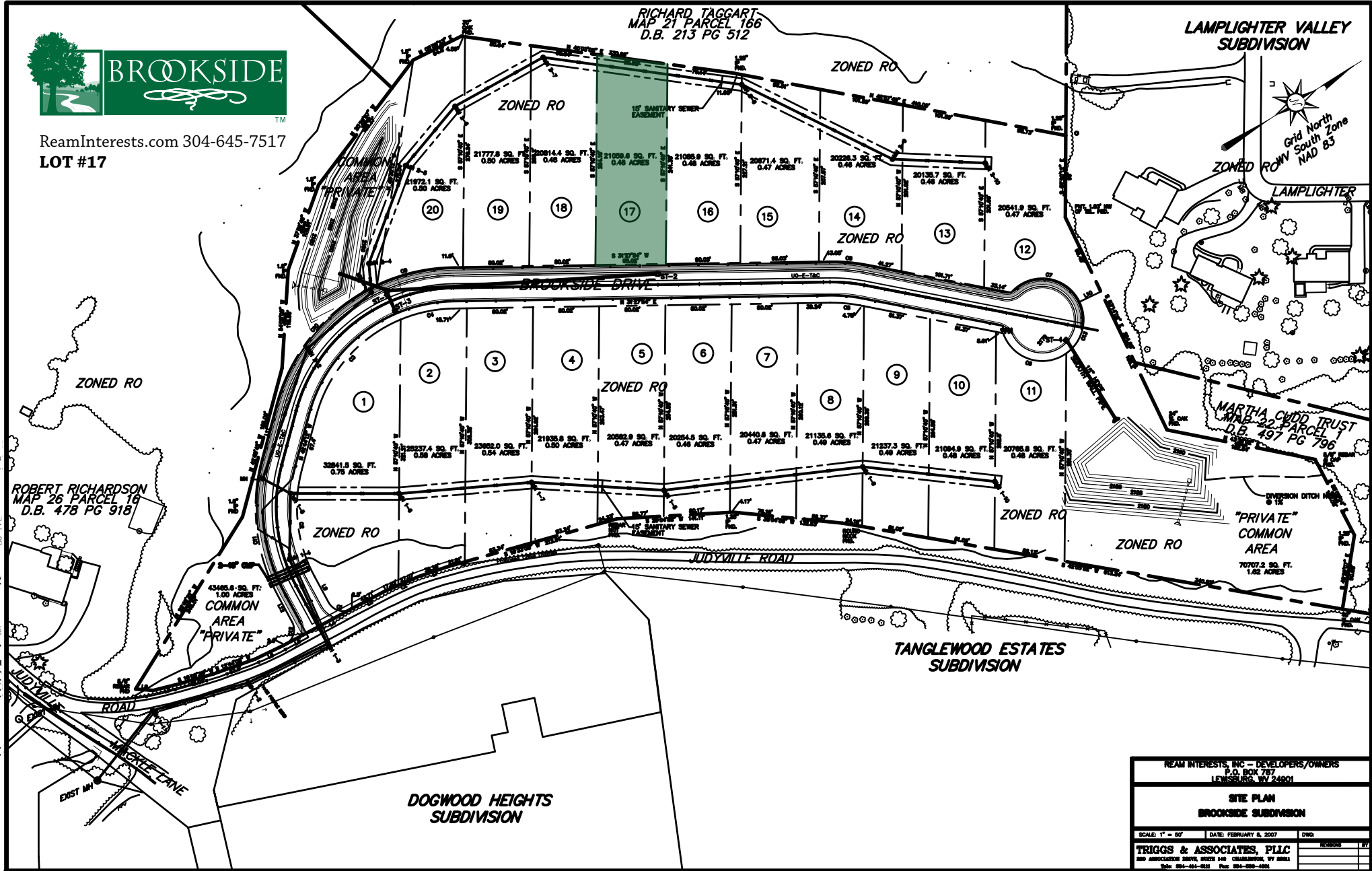
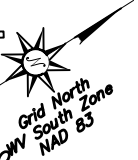


ReamInterests.com 304-645-7517

LOT #17

RICHARD TAGGART  
MAP 21 PARCEL 166  
D.B. 213 PG 512

LAMPLIGHTER VALLEY  
SUBDIVISION



ROBERT RICHARDSON  
MAP 26 PARCEL 16  
D.B. 478 PG 918

MARTHA CHODD TRUST  
MAP 22 PARCEL 9  
D.B. 497 PG 796

REAM INTERESTS, INC - DEVELOPERS/OWNERS P.O. BOX 707 LEWISBURG, WV 24801		
<b>SITE PLAN</b> <b>BROOKSIDE SUBDIVISION</b>		
SCALE: 1" = 50'	DATE: FEBRUARY 8, 2007	DWG. NO.
TRIGGS & ASSOCIATES, PLLC 280 ASSOCIATION DRIVE, SUITE 100 CHARLESTON, WV 25301 PH: 304-544-0221 FAX: 304-544-0222		REVISION BY